

Operator  
Telephone  
Fax  
e-Mail

## Table of contents

---

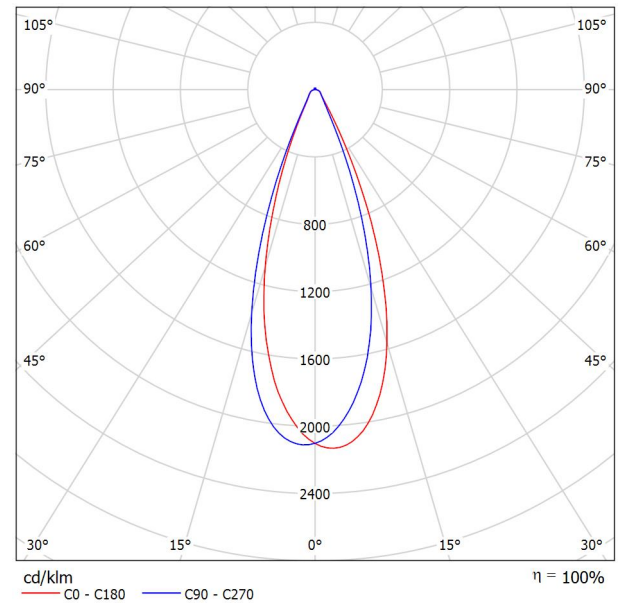
<b>Project 1</b>	
Table of contents	1
<b>600W 40jã 600W 40jã</b>	
Luminaire Data Sheet	2
<b>600W 40jã</b>	
LDC (Polar)	3
<b>Exterior Scene 1</b>	
Planning data	4
Luminaire parts list	5
Luminaires (layout plan)	6
Luminaires (coordinates list)	7
Sport Sites (layout plan)	10
Sport Sites (Coordinates List)	11
3D Rendering	12
False Color Rendering	13
<b>Exterior Surfaces</b>	
<b>Ground Element 1</b>	
<b>Surface 1</b>	
Isolines (E)	14
Greyscale (E)	15
Value Chart (E)	16

Operator  
Telephone  
Fax  
e-Mail

## 600W 40jã 600W 40jã / Luminaire Data Sheet

See our luminaire catalog for an image of the luminaire.

Luminous emittance 1:



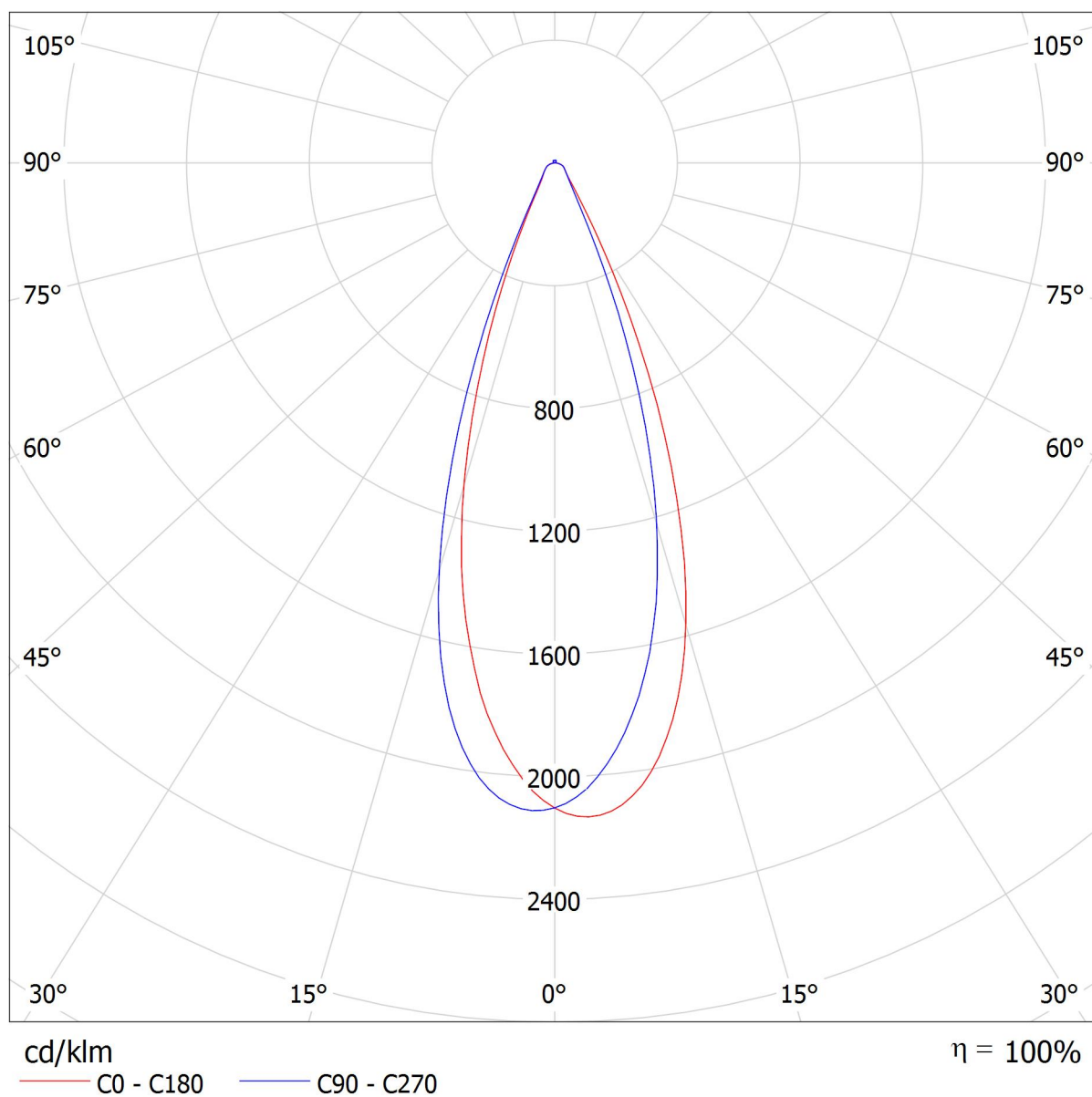
Luminaire classification according to CIE: 97  
CIE flux code: 87 94 98 97 100

Due to missing symmetry properties, no UGR table can be displayed for this luminaire.

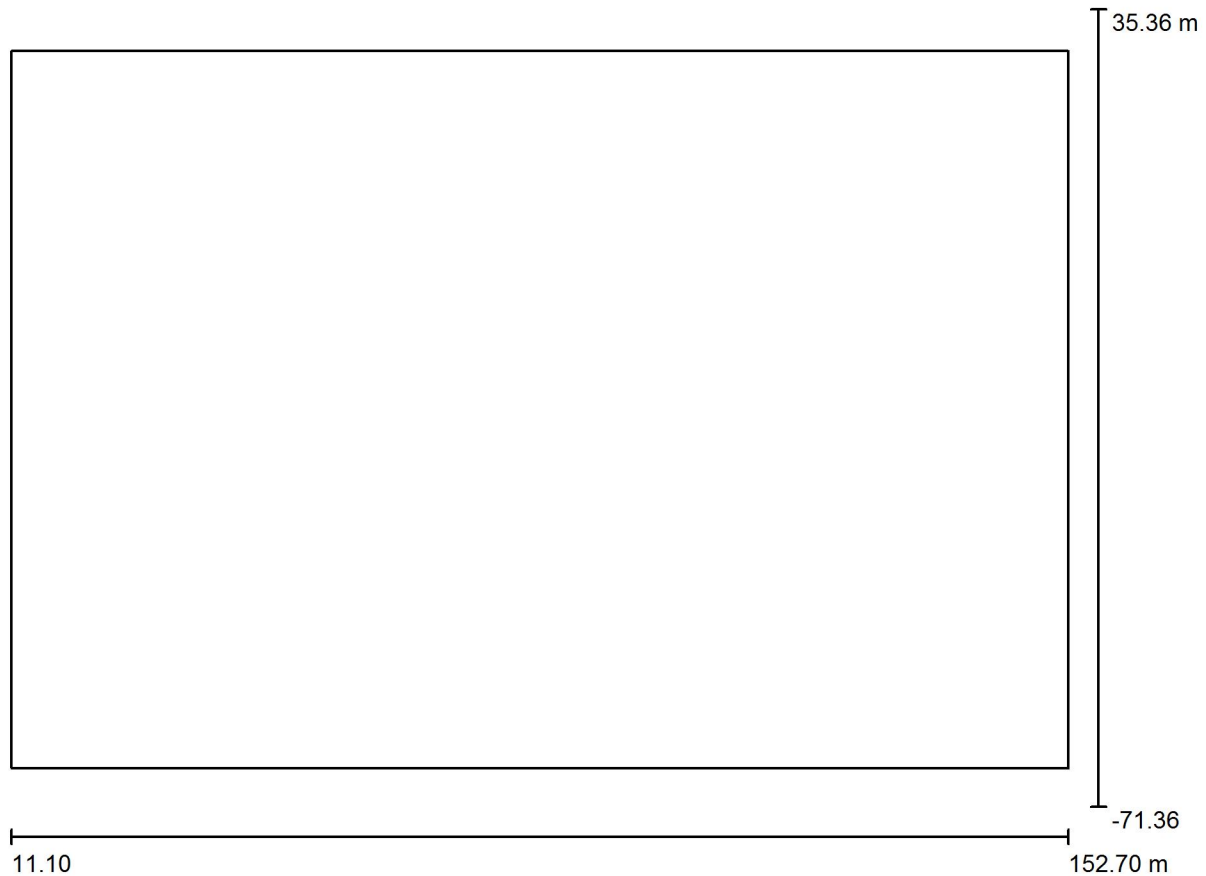
Operator  
Telephone  
Fax  
e-Mail

**600W 40ĩ 600W 40ĩ / LDC (Polar)**

Luminaire: 600W 40ĩ 600W 40ĩ  
Lamps: 1 x



Operator  
Telephone  
Fax  
e-Mail

**Exterior Scene 1 / Planning data**

Light loss factor: 0.80, ULR (Upward Light Ratio): 18.5%

Scale 1:1013

**Luminaire Parts List**

No.	Pieces	Designation (Correction Factor)	$\Phi$ (Luminaire) [lm]	$\Phi$ (Lamps) [lm]	P [W]
1	80	600W 40ĩă 600W 40ĩă (1.000)	69276	69309	605.1
Total:			5542104	Total: 5544688	48408.0

Operator  
Telephone  
Fax  
e-Mail

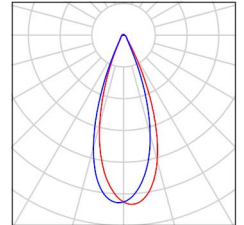
---

**Exterior Scene 1 / Luminaire parts list**

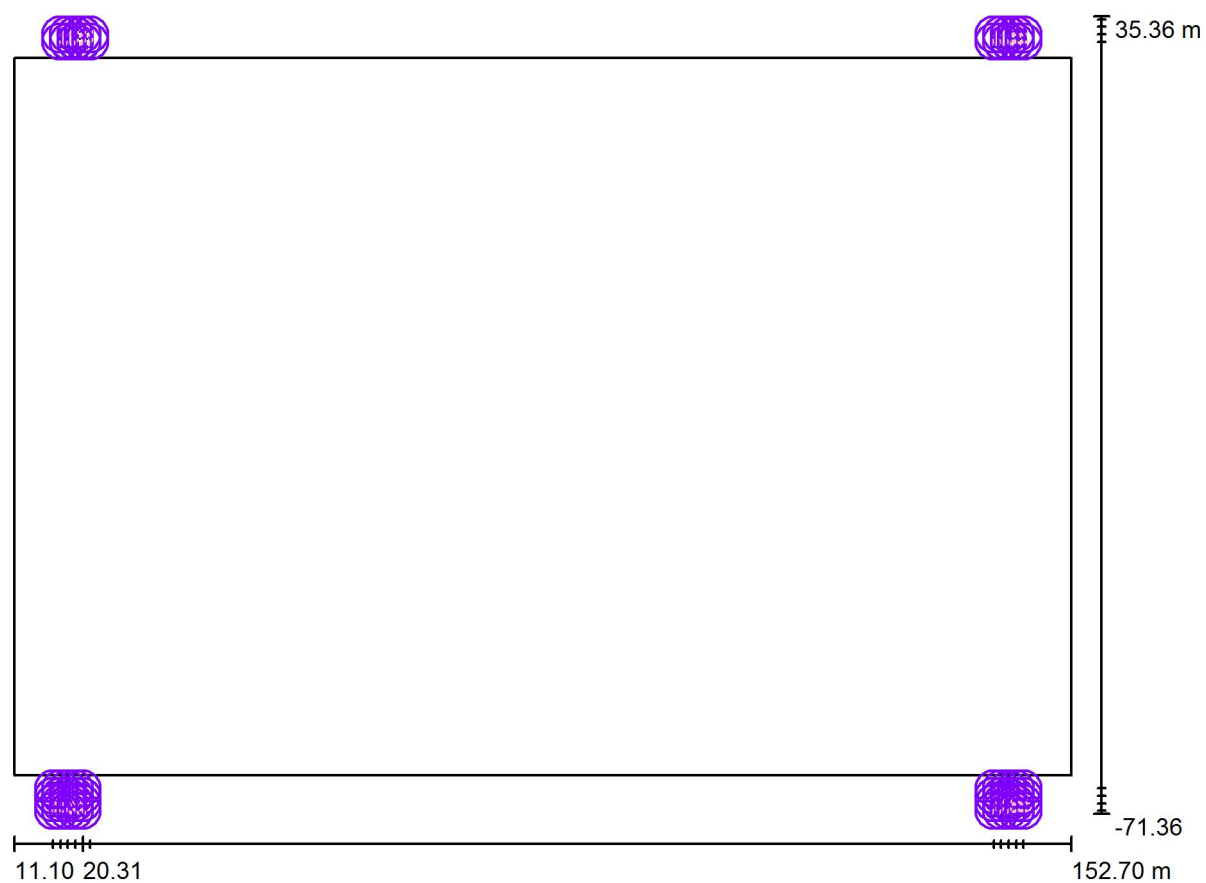
---

80 Pieces 600W 40jã 600W 40jã  
Article No.: 600W 40jã  
Luminous flux (Luminaire): 69276 lm  
Luminous flux (Lamps): 69309 lm  
Luminaire Wattage: 605.1 W  
Luminaire classification according to CIE: 97  
CIE flux code: 87 94 98 97 100  
Fitting: 1 x User defined (Correction Factor  
1.000).

See our luminaire  
catalog for an image of  
the luminaire.



Operator  
Telephone  
Fax  
e-Mail

**Exterior Scene 1 / Luminaires (layout plan)**

Scale 1 : 1013

**Luminaire Parts List**

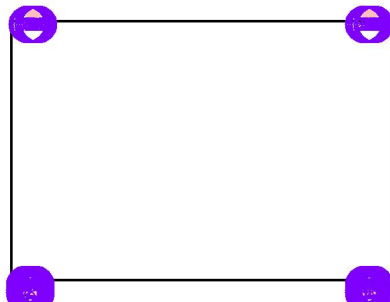
No.	Pieces	Designation
1	80	600W 40jã 600W 40jã

Operator  
Telephone  
Fax  
e-Mail

## Exterior Scene 1 / Luminaires (coordinates list)

**600W 40iã 600W 40iã**

69276 lm, 605.1 W, 1 x 1 x User defined (Correction Factor 1.000).



No.	Position [m]			Rotation [°]		
	X	Y	Z	X	Y	Z
1	17.307	34.970	30.000	-40.0	5.0	0.0
2	18.307	34.970	30.000	-40.0	-15.0	0.0
3	19.307	34.970	30.000	-40.0	-40.0	0.0
4	20.307	34.970	30.000	-40.0	-50.0	0.0
5	21.307	34.970	30.000	-40.0	-60.0	0.0
6	17.307	33.970	29.500	-60.0	5.0	0.0
7	19.307	33.970	29.500	-60.0	-40.0	0.0
8	18.307	33.970	29.500	-60.0	-15.0	0.0
9	20.307	33.970	29.500	-60.0	-50.0	0.0
10	21.307	33.970	29.500	-60.0	-60.0	0.0
11	17.307	32.970	29.000	-70.0	5.0	0.0
12	19.307	32.970	29.000	-70.0	-40.0	0.0
13	18.307	32.970	29.000	-70.0	-15.0	0.0
14	20.307	32.970	29.000	-70.0	-50.0	0.0
15	21.307	32.970	29.000	-70.0	-60.0	0.0
16	17.307	31.970	28.500	-80.0	5.0	0.0
17	19.307	31.970	28.500	-80.0	-40.0	0.0
18	18.307	31.970	28.500	-80.0	-15.0	0.0
19	20.307	31.970	28.500	-80.0	-50.0	0.0
20	21.307	31.970	28.500	-80.0	-60.0	0.0
21	142.307	34.970	30.000	-50.0	60.0	0.0
22	143.307	34.970	30.000	-50.0	50.0	0.0
23	144.307	34.970	30.000	-50.0	40.0	0.0
24	145.307	34.970	30.000	-50.0	20.0	0.0
25	146.307	34.970	30.000	-50.0	-5.0	0.0
26	142.307	33.970	29.500	-60.0	60.0	0.0
27	144.307	33.970	29.500	-60.0	40.0	0.0
28	143.307	33.970	29.500	-60.0	50.0	0.0

Operator  
Telephone  
Fax  
e-Mail

### Exterior Scene 1 / Luminaires (coordinates list)

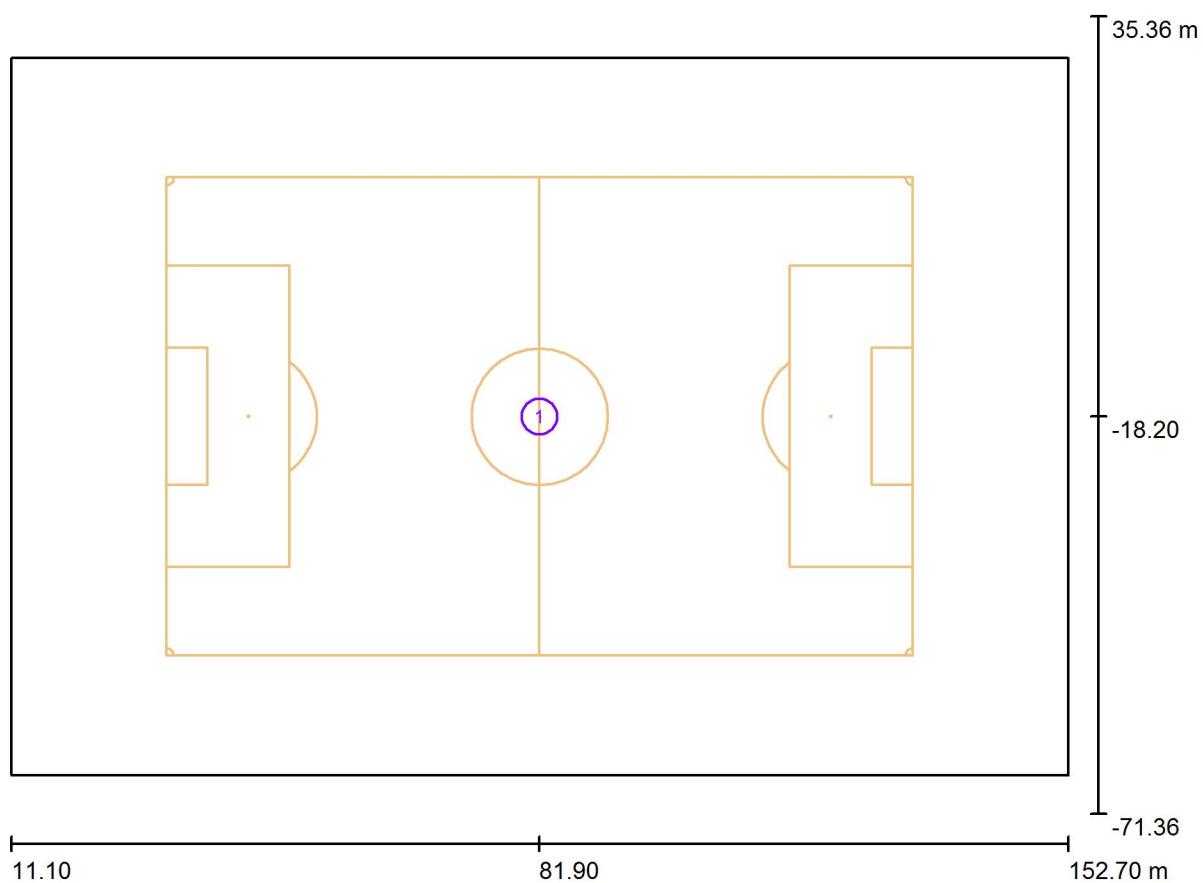
No.	Position [m]			Rotation [°]		
	X	Y	Z	X	Y	Z
29	145.307	33.970	29.500	-60.0	20.0	0.0
30	146.307	33.970	29.500	-60.0	-5.0	0.0
31	142.307	32.970	29.000	-70.0	60.0	0.0
32	144.307	32.970	29.000	-70.0	40.0	0.0
33	143.307	32.970	29.000	-70.0	50.0	0.0
34	145.307	32.970	29.000	-70.0	20.0	0.0
35	146.307	32.970	29.000	-70.0	-5.0	0.0
36	142.307	31.970	28.500	-80.0	60.0	0.0
37	144.307	31.970	28.500	-80.0	40.0	0.0
38	143.307	31.970	28.500	-80.0	50.0	0.0
39	145.307	31.970	28.500	-80.0	20.0	0.0
40	146.307	31.970	28.500	-80.0	-5.0	0.0
41	142.307	-67.970	30.000	50.0	60.0	0.0
42	143.307	-67.970	30.000	50.0	50.0	0.0
43	144.307	-67.970	30.000	50.0	40.0	0.0
44	145.307	-67.970	30.000	50.0	20.0	0.0
45	146.307	-67.970	30.000	50.0	-5.0	0.0
46	142.307	-68.970	29.500	60.0	60.0	0.0
47	144.307	-68.970	29.500	60.0	40.0	0.0
48	143.307	-68.970	29.500	60.0	50.0	0.0
49	145.307	-68.970	29.500	60.0	20.0	0.0
50	146.307	-68.970	29.500	60.0	-5.0	0.0
51	142.307	-69.970	29.000	70.0	60.0	0.0
52	144.307	-69.970	29.000	70.0	40.0	0.0
53	143.307	-69.970	29.000	70.0	50.0	0.0
54	145.307	-69.970	29.000	70.0	20.0	0.0
55	146.307	-69.970	29.000	70.0	-5.0	0.0
56	142.307	-70.970	28.500	80.0	60.0	0.0
57	144.307	-70.970	28.500	80.0	40.0	0.0
58	143.307	-70.970	28.500	80.0	50.0	0.0
59	145.307	-70.970	28.500	80.0	20.0	0.0
60	146.307	-70.970	28.500	80.0	-5.0	0.0
61	16.307	-67.970	30.000	50.0	5.0	0.0
62	17.307	-67.970	30.000	50.0	-20.0	0.0
63	18.307	-67.970	30.000	50.0	-40.0	0.0
64	19.307	-67.970	30.000	50.0	-50.0	0.0
65	20.307	-67.970	30.000	50.0	-60.0	0.0
66	16.307	-68.970	29.500	60.0	5.0	0.0

Operator  
Telephone  
Fax  
e-Mail

**Exterior Scene 1 / Luminaires (coordinates list)**

No.	Position [m]			Rotation [°]		
	X	Y	Z	X	Y	Z
67	18.307	-68.970	29.500	60.0	-40.0	0.0
68	17.307	-68.970	29.500	60.0	-20.0	0.0
69	19.307	-68.970	29.500	60.0	-50.0	0.0
70	20.307	-68.970	29.500	60.0	-60.0	0.0
71	16.307	-69.970	29.000	70.0	5.0	0.0
72	18.307	-69.970	29.000	70.0	-40.0	0.0
73	17.307	-69.970	29.000	70.0	-20.0	0.0
74	19.307	-69.970	29.000	70.0	-50.0	0.0
75	20.307	-69.970	29.000	70.0	-60.0	0.0
76	16.307	-70.970	28.500	80.0	5.0	0.0
77	18.307	-70.970	28.500	80.0	-40.0	0.0
78	17.307	-70.970	28.500	80.0	-20.0	0.0
79	19.307	-70.970	28.500	80.0	-50.0	0.0
80	20.307	-70.970	28.500	80.0	-60.0	0.0

Operator  
Telephone  
Fax  
e-Mail

**Exterior Scene 1 / Sport Sites (layout plan)**

Scale 1 : 1013

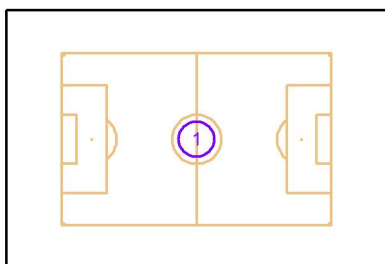
**Sport Site Parts List**

No.	Pieces	Designation
1	1	Soccer Field

Operator  
Telephone  
Fax  
e-Mail

## Exterior Scene 1 / Sport Sites (Coordinates List)

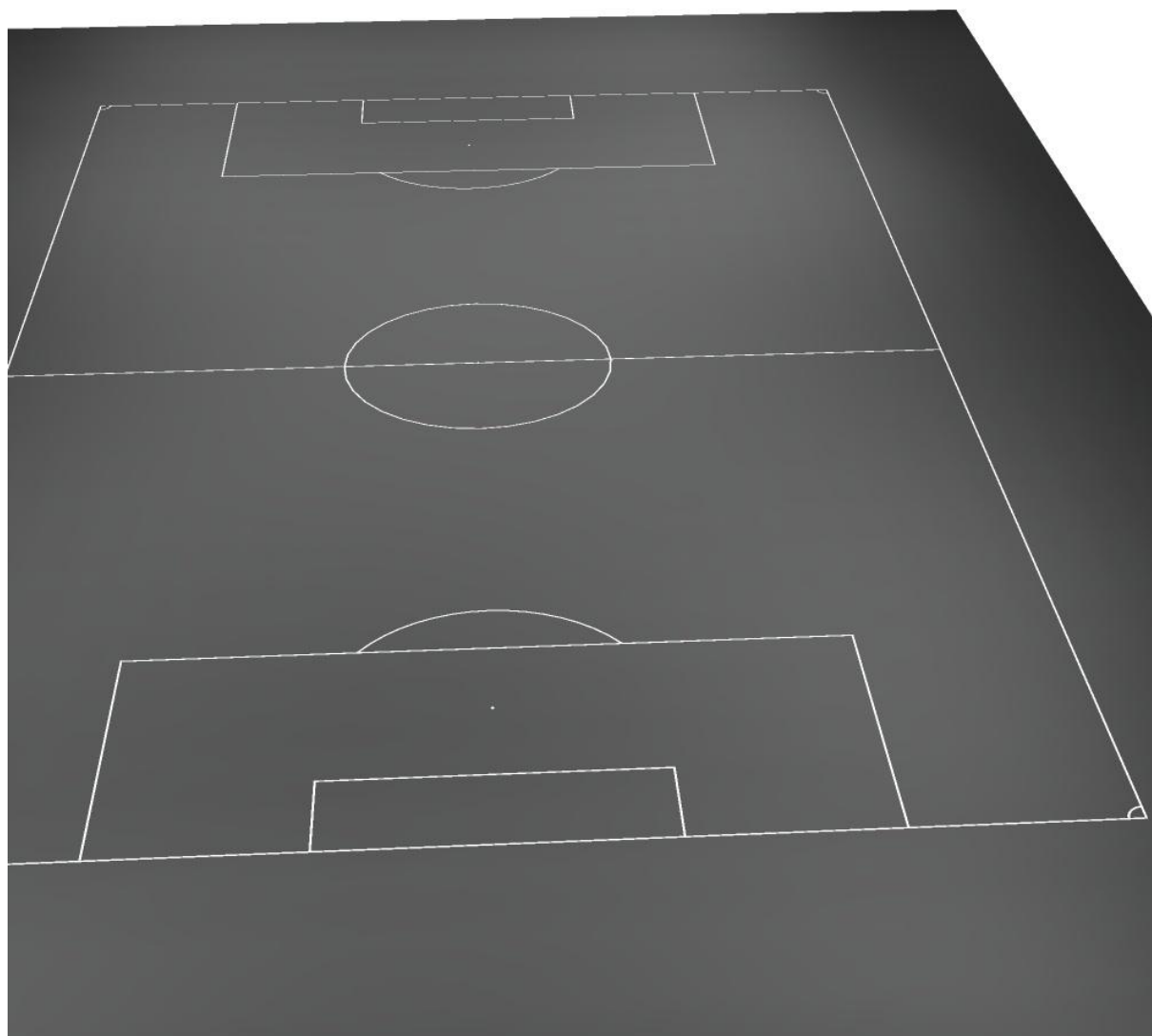
### Soccer Field



No.	Position [m]			Size Playing Area [m]		Size Total Area [m]		Rotation [°]		
	X	Y	Z	L	W	L	W	X	Y	Z
1	81.900	-18.200	0.000	100.000	64.000	141.600	96.000	0.0	0.0	0.0

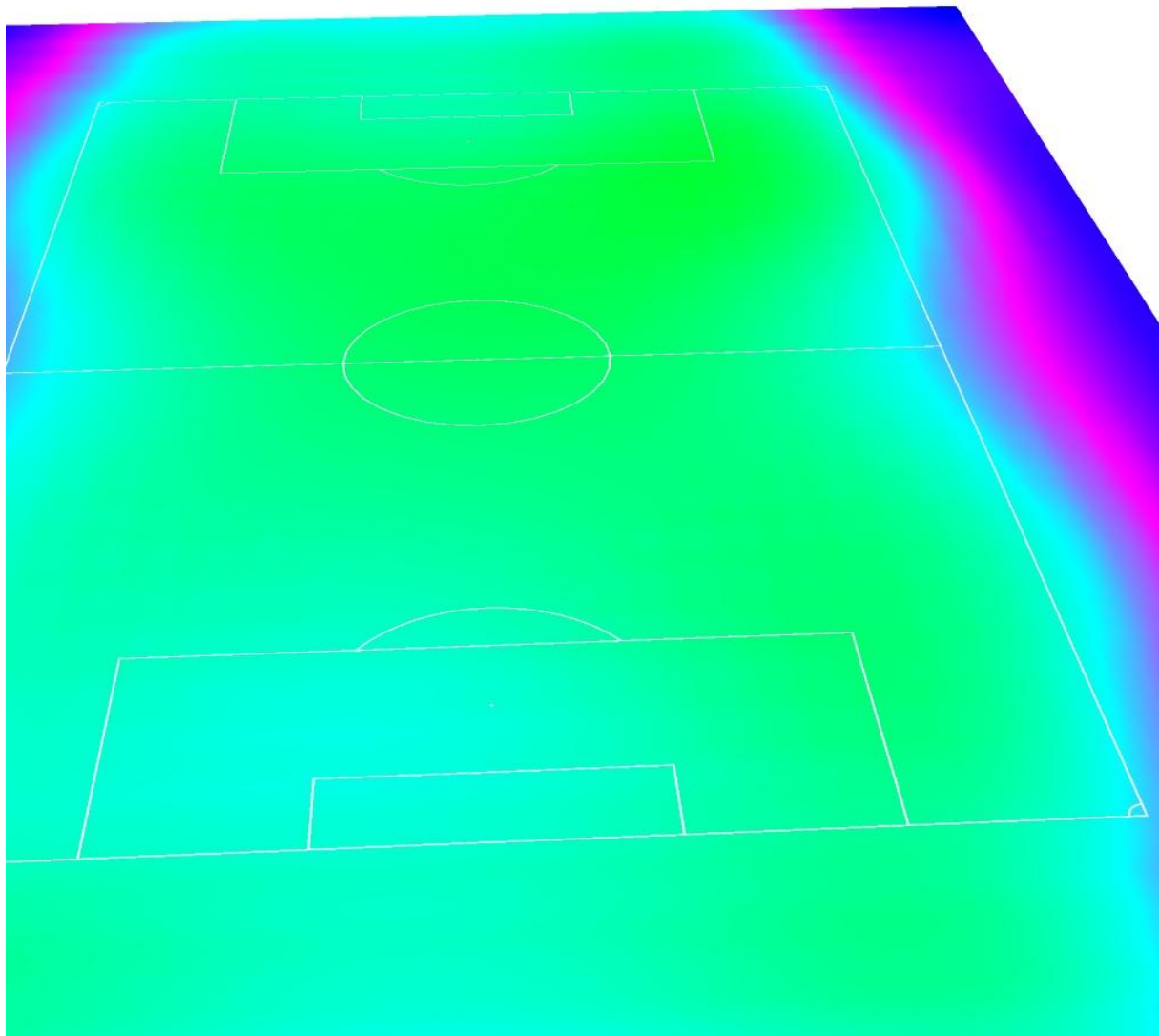
Operator  
Telephone  
Fax  
e-Mail

## Exterior Scene 1 / 3D Rendering



Operator  
Telephone  
Fax  
e-Mail

## Exterior Scene 1 / False Color Rendering



20

50

100

150

250

280

320

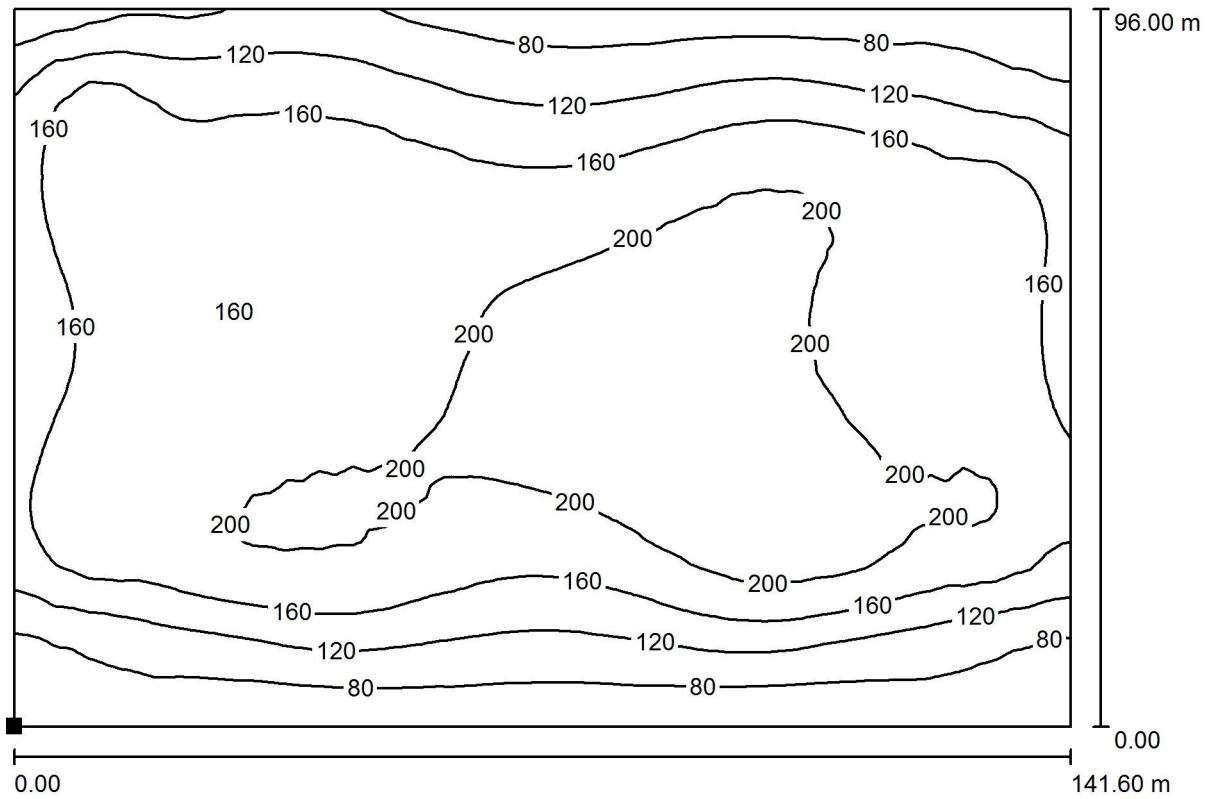
350

400

lx

Operator  
Telephone  
Fax  
e-Mail

### Exterior Scene 1 / Ground Element 1 / Surface 1 / Isolines (E)



Values in Lux, Scale 1 : 1013

Position of surface in external scene:

Marked point:

(11.100 m, -66.200 m, 0.000 m)



Grid: 128 x 128 Points

$E_{av}$  [lx]  
158

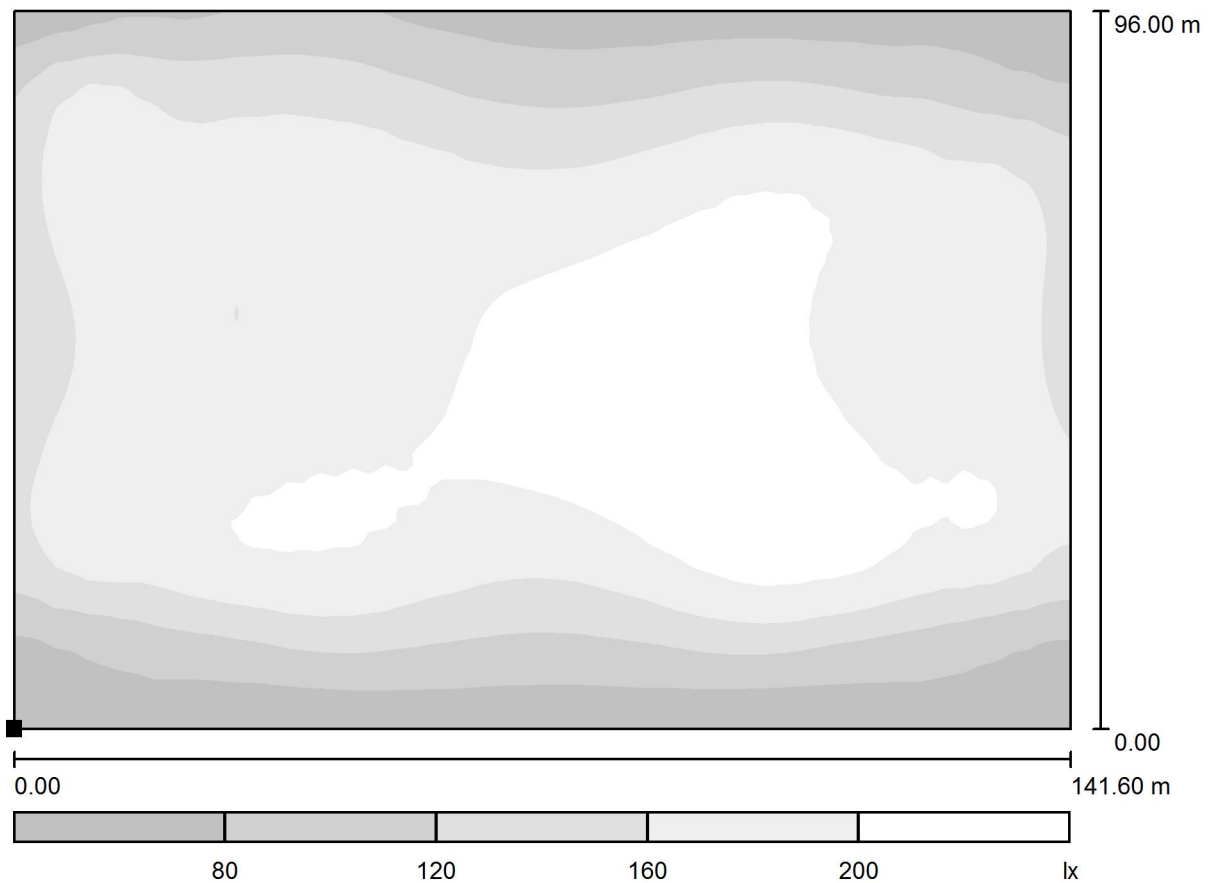
$E_{min}$  [lx]  
48

$E_{max}$  [lx]  
232

$u0$   
0.307

$E_{min} / E_{max}$   
0.208

Operator  
Telephone  
Fax  
e-Mail

**Exterior Scene 1 / Ground Element 1 / Surface 1 / Greyscale (E)**

Scale 1 : 1013

Position of surface in external scene:

Marked point:

(11.100 m, -66.200 m, 0.000 m)

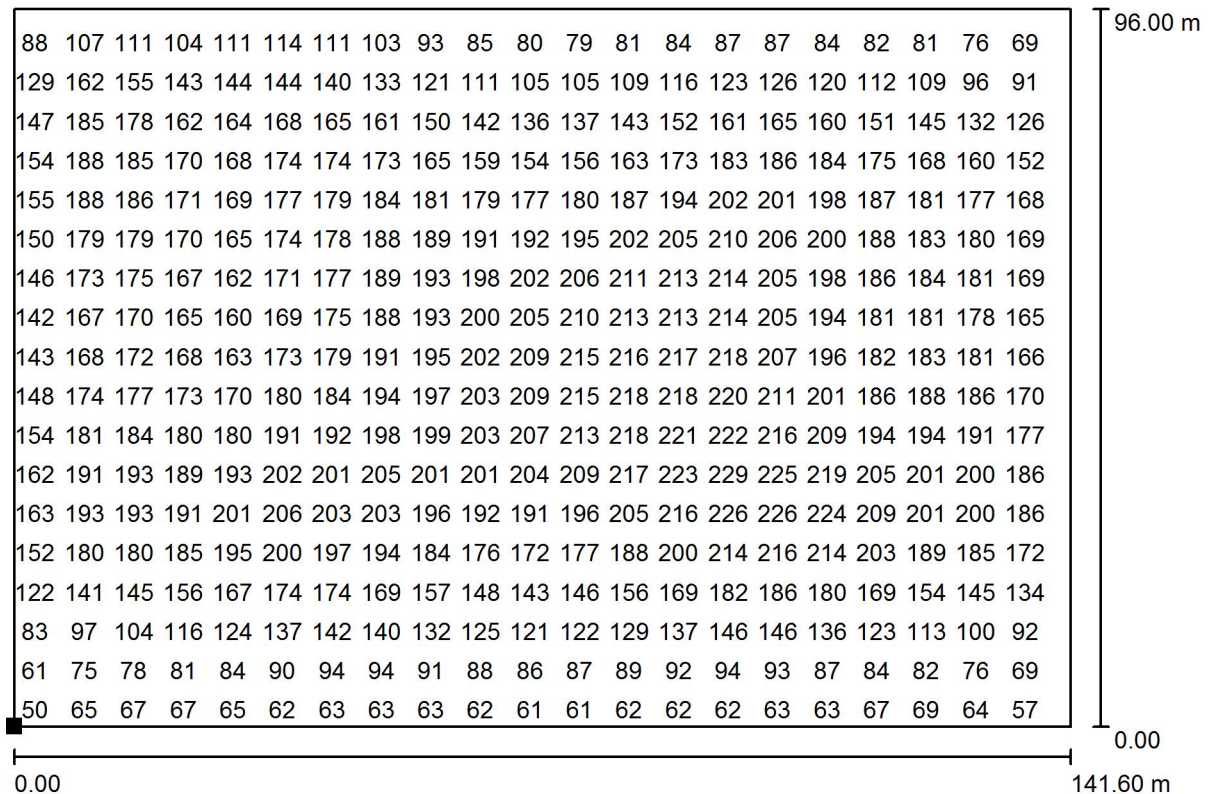


Grid: 128 x 128 Points

 $E_{av}$  [lx]  
158 $E_{min}$  [lx]  
48 $E_{max}$  [lx]  
232 $u0$   
0.307 $E_{min} / E_{max}$   
0.208

Operator  
Telephone  
Fax  
e-Mail

## Exterior Scene 1 / Ground Element 1 / Surface 1 / Value Chart (E)



Values in Lux, Scale 1 : 1013

Not all calculated values could be displayed.

Position of surface in external scene:

Marked point:

(11.100 m, -66.200 m, 0.000 m)



Grid: 128 x 128 Points

$E_{av}$  [lx]  
158

$E_{min}$  [lx]  
48

$E_{max}$  [lx]  
232

$u_0$   
0.307

$E_{min} / E_{max}$   
0.208